

INSTRUCTION FOR USE

MANTA X75³[®] PERSONAL PROTECTION MASK



Fire Innovations
830 Petaluma Blvd N
Petaluma, California 94952
United States
www.fireinnovations.com

DESIGN FEATURES

- Top quality CarbonX materials
- Reusable/washable
- Patent pending nose clip
- Filters 75% of particles .3 microns or larger
- Breathable better, than the typical N95 mask

MANTA 75³



PRODUCT OVERVIEW

The Manta X75.3 is made from quality Carbon X materials and special filtration media. Our masks are created from breathable, non-flammable Carbon X fabric and a non-woven polyester filter material. The X75.3 captures 75% of particulates 0.3 microns or larger.

HIGHLIGHTS

Qualitative Fit Testing can be achieved using either a Bittrex or Saccharin solution. Testing has shown the Manta X75.3 using the patent pending removable nose clip, and properly donned, can pass a standard Qualitative mask fit test. The wearer must have direct skin-to-mask contact for a correct fit. Facial hair will prevent a proper seal. Additional information regarding the proper fit test procedure can be found at fireinnovations.com

VERSATILITY

The Manta X75.3 is suitable for anyone needing a higher degree of particulate protection and breathability than would be commonly available from a typical surgical or home-produced mask. Washable and reusable. Testing has shown the Manta X75.3 particulate filtering and breathability improve 10% after the first few washings.

SPECIFICATIONS

High breathability at 50 cfm

Captures 75% of particulates 0.3 microns or larger.

Three-layer construction: Two layers of non-flammable Carbon X[®] TK-60 knit (front and back covering) and a single layer of 6 oz polyester nonwoven filter media (middle layer).

Machine washable but hand washing with soap and water recommended. Hang or machine dry.

For comparison purposes, the N95 mask offers 95% particulate filtration and breathability of 32 cfm. Of note, the Manta X75.3 masks are designed for industrial and commercial use and are non-medical grade. The above statistics are the result of in-house testing by Tex Tech and have not yet been verified by an independent third-party.



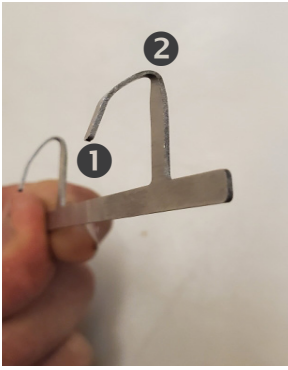
IMPORTANT

Wash and dry prior to use to improve the filtration and breathability. To properly fit the Manta X75.3, please follow donning instructions. Failure to do so, may result in the reduction of the mask effectiveness.

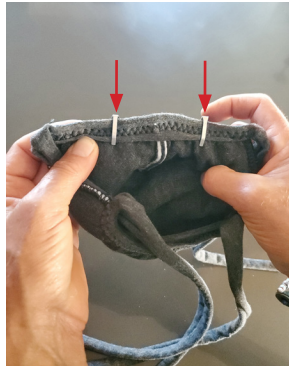


Additional video instructions available at:
<http://fireinnovations.com/videos/mantax75>

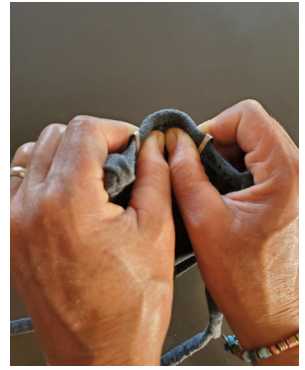
MANTA X75.3 DONNING



Bend the tip slightly **1**, bend in the middle as shown **2**



Install the nose clip and crimp the metal tabs to secure.



Using your thumbs, bend the nose clip to fit around your nose.



Finally, create a slight upward curve to the nose clip ends.



Identifying characters may be written on the back of the product label.



Tie the tops straps together and pull the straps over your head. Adjust as needed, to create a secure fit.

WEAR INSTRUCTIONS

1. Wash and dry prior to use to improve the filtration and breathability.
2. Make sure the mask covers your nose. Press the moldable nose clip to conform to the bridge of the nose. This will be immensely helpful for glasses wearers as it helps to prevent the lenses from fogging.
3. First tie the bottom strap behind your neck. Place the mask into position, then tie the upper strap near the crown of your head. Adjust as needed for a proper fit.
4. Keep your mask on! This is important as it prevents contamination of your mask. Excessive handling of your mask increases risk of germ spread.

WASHING INSTRUCTIONS

1. Remove the nose clip prior to washing.
2. The Manta X75.3 mask is machine washable, but hand washing is recommended.
3. Soak and agitate the mask in warm soapy water. Rinse well.
4. Hang or machine dry.
5. Store mask in an airtight resealable bag between uses.

MANTA 75³[®]

PERSONAL PROTECTION MASK



Fire Innovations
830 Petaluma Blvd N
Petaluma, California 94952
United States
www.fireinnovations.com

FIPUM-1104-0010.A